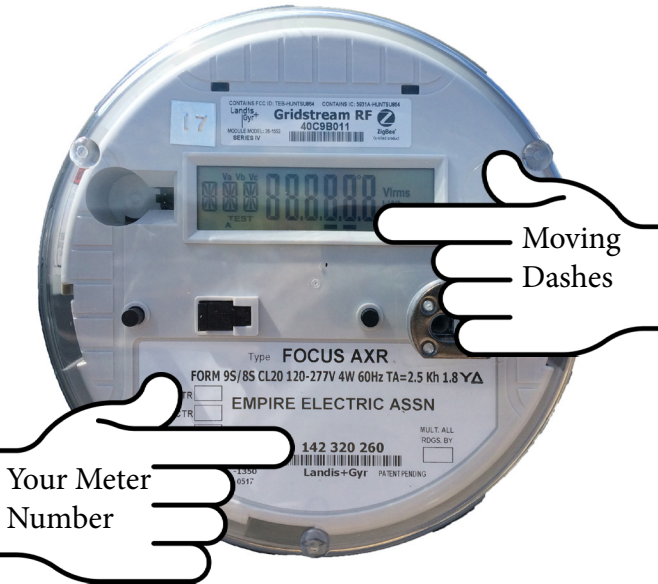
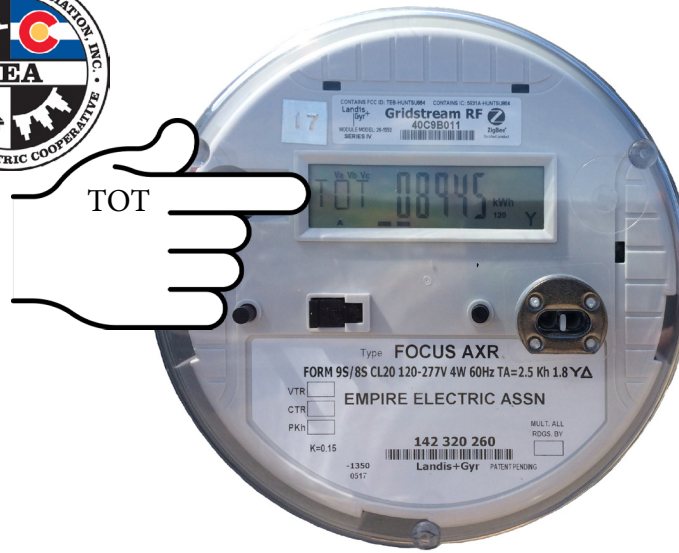


Empire Electric Association, Inc.
 801 N Broadway • PO Box K
 Cortez, CO 81321
 970-565-4444 • www.eea.coop



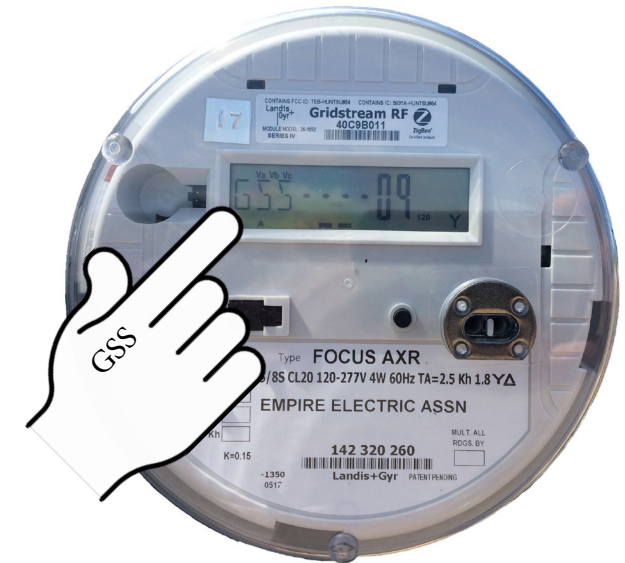
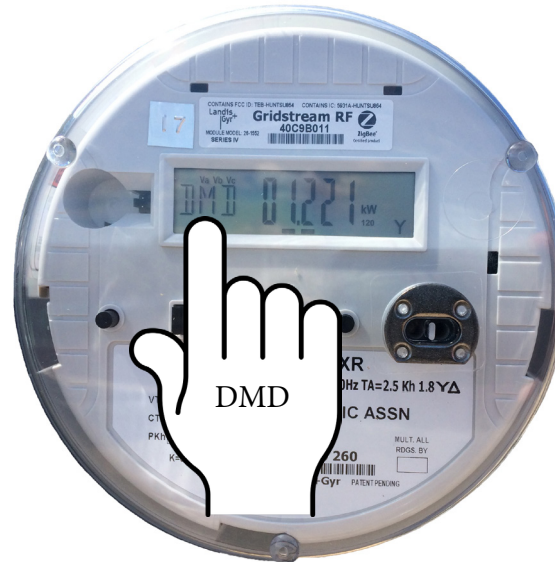
How to Read Your Electric Meter

The face of the meter has a Liquid Crystal Display (LCD). It will scroll through 5 screens, changing about every few seconds.



TOT: This screen displays the total kilowatt hours (kWh) that have been used by the meter since it was installed.

INS: This is the instantaneous Demand in kW and is the amount of power flowing through the meter in real time.



The first screen is an LCD display test that lights up all information on the display to ensure readings display properly. The 2 dashes under the numbers will move from left to right and their speed indicates how much power is being used. The faster they move, the more power is going through the meter.

DMD: This is the highest Demand in kilowatts (kW) recorded so far during the current billing period. It is reset each month.

GSS: This is a diagnostic screen and displays codes for faults and communication strength.